



HOUSE AND LAND PACKAGE



Kirra 206 | Cosmo



3 beds



2.5 baths



2 parks



22 squares



15m wide

\$293,000

House only

This house and land package includes:

- 4 Star Designer Essentials inclusions
- BASIX requirements including water tank
- Standard site costs
- Termite resistant frames and trusses
- Large double garage with remote control door
- Flyscreens to all windows and doors
- Caesarstone kitchen benchtops
- Ilve stainless steel appliance package including dishwasher
- Alfresco outdoor entertaining area
- Daiklen ducted air conditioner
- Complies with estate design guidelines
- *Turnkey package available*





Kirra 206 Cosmo

montgomeryhomes.com.au



3 beds



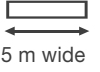
2.5 baths



2 parks

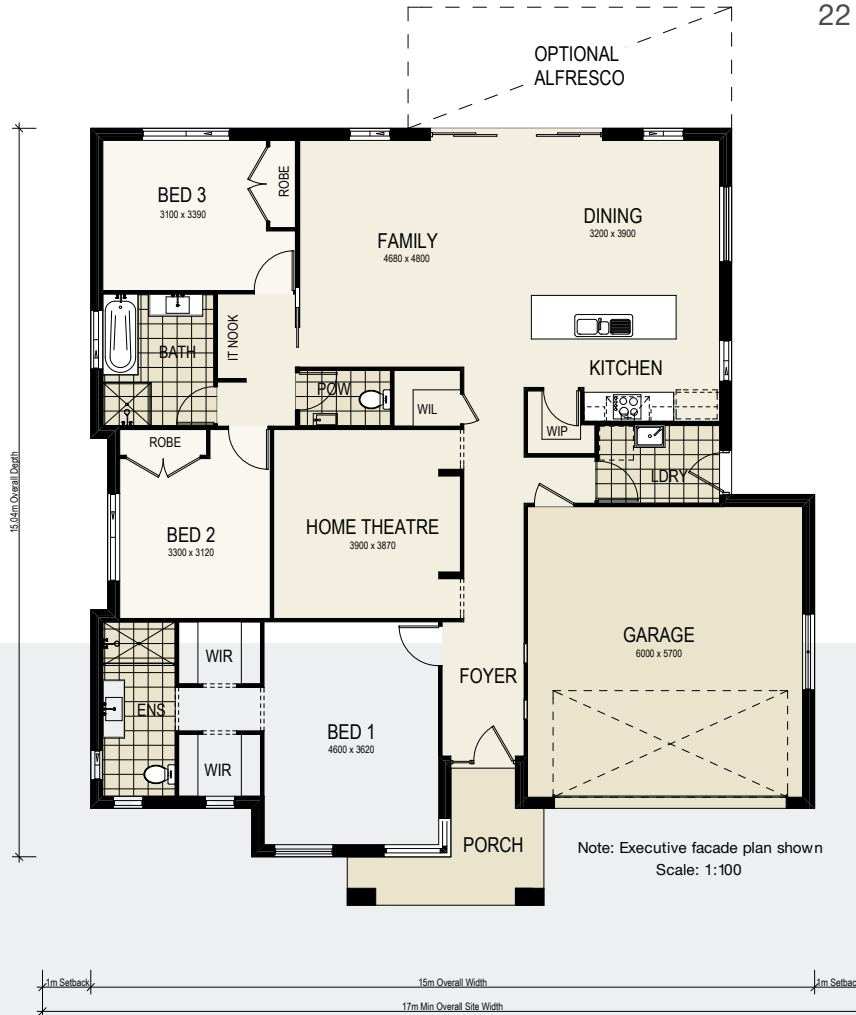


22 squares



15 m wide

TOTAL FLOOR AREA
22 squares or 205.17m²



For more information, please contact:

Meagan Anderson

0413 685 277

meagan@montgomeryhomes.com.au

CONDITIONS APPLY Please note that this is not a final tender and Montgomery Homes reserves the right to revise plans, pricing & all specifications without obligation or notice. Pricing is subject to Council & any other statutory or regulatory authority requirements (Eg. BASIX, Mines, Bushfire etc). Designs and plans are Copyright protected and remain the property of Montgomery Homes Pty Ltd at all times. Pictures shown are for illustrative purposes only. Price excludes any external works i.e. landscaping, driveway, retaining walls & excludes floor coverings to living areas & bedrooms etc, window furnishings & light fittings.



montgomeryhomes.com.au

