



# HOUSE AND LAND PACKAGE



The Bower  
MEDOWIE

Southport 217 | Cosmo



4 beds



2.5 baths



2 parks



22 squares



10.7m wide

**\$301,700**  
House only

## This house and land package includes:

- 4 Star Designer Essentials inclusions
- BASIX requirements including water tank
- Standard site costs
- Termite resistant frames and trusses
- Large double garage with remote control door
- Flyscreens to all windows and doors
- Caesarstone kitchen benchtops
- Ilve stainless steel appliance package including dishwasher
- Alfresco outdoor entertaining area
- Daikin ducted air conditioning
- Complies with estate design guidelines
- \*Turnkey package available\*





# Southport 217 Cosmo

montgomeryhomes.com.au



4 beds



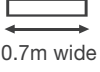
2.5 baths



2 parks

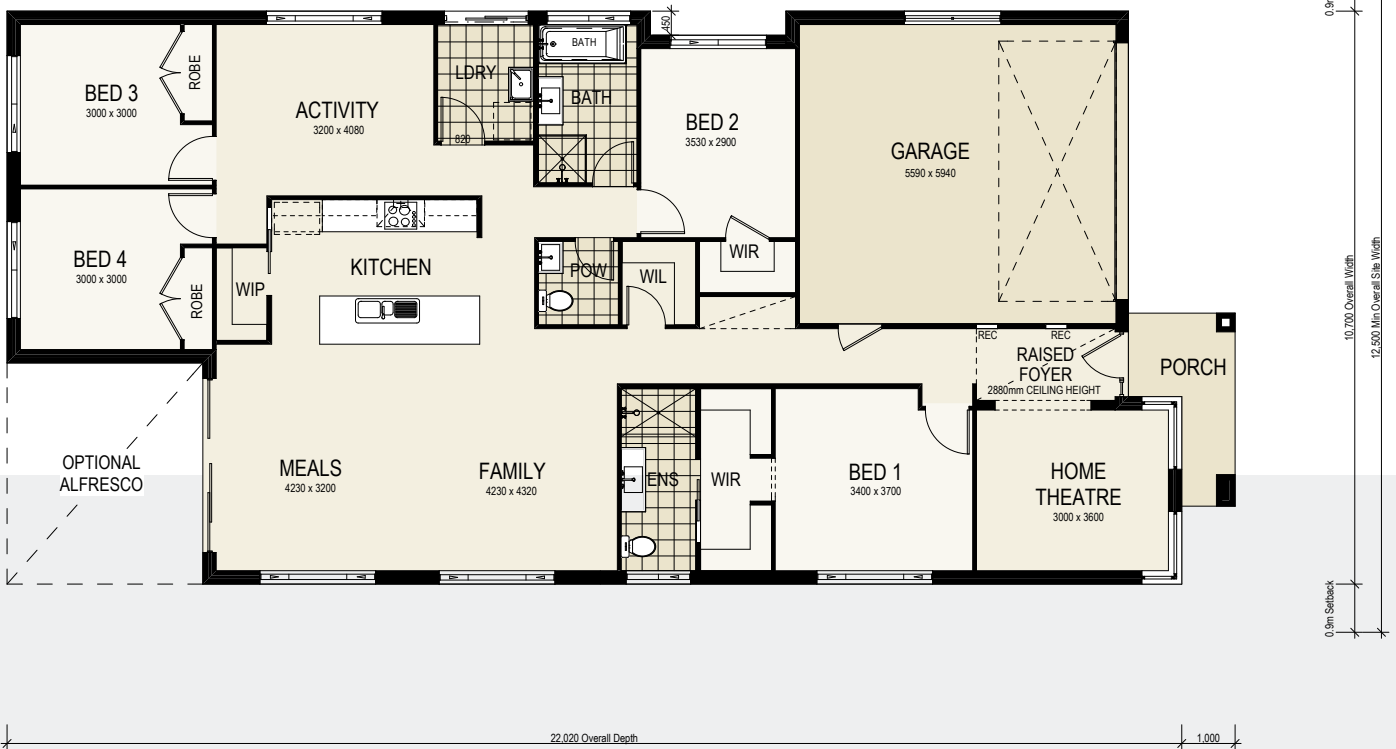


23 squares



10.7m wide

**TOTAL FLOOR AREA**  
23.3 squares or 216.44m<sup>2</sup>



**For more information, please contact:**

Meagan Anderson  
0413 685 277

meagan@montgomeryhomes.com.au

**CONDITIONS APPLY** Please note that this is not a final tender and Montgomery Homes reserves the right to revise plans, pricing & all specifications without obligation or notice. Pricing is subject to Council & any other statutory or regulatory authority requirements (Eg. BASIX, Mines, Bushfire etc). Designs and plans are Copyright protected and remain the property of Montgomery Homes Pty Ltd at all times. Pictures shown are for illustrative purposes only. Price excludes any external works i.e. landscaping, driveway, retaining walls & excludes floor coverings to living areas & bedrooms etc, window furnishings & light fittings.



montgomeryhomes.com.au

