

# House only package.

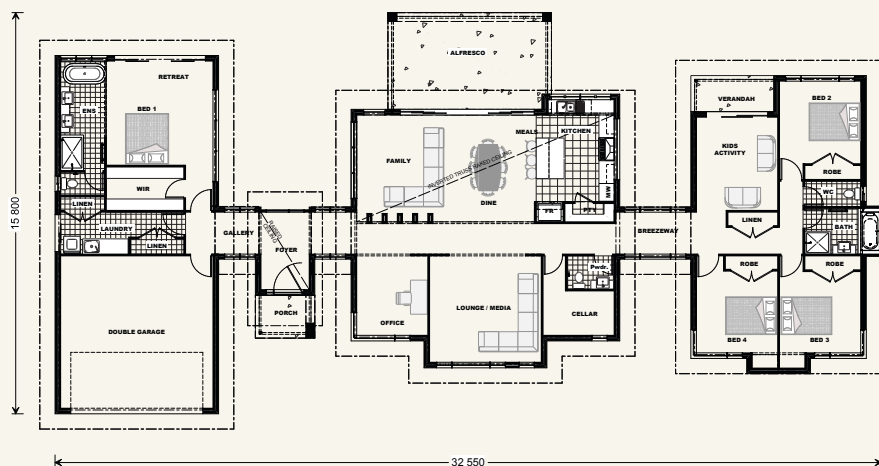
## Rochedale 320.



### From \$467,320\* Prestige Facade

#### Package includes

- + Standard Site Costs
- + Basix including watertank
- + Coloured Concrete Driveway & Path
- + Covered Alfresco Area including slab
- + Carpet and Tile Floor Coverings
- + Flyscreens to all Windows
- + Daikin Ducted Airconditioning
- + 2550 Ceilings
- + Smeg Appliances
- + Caesarstone Benchtops to Kitchen



### Rochedale 320.

4 2.5 2

Itemised Floor Areas	Area
Internal	247.28 m <sup>2</sup>
Garage	40.5 m <sup>2</sup>
Alfresco	24.3 m <sup>2</sup>
Porch	3.5 m <sup>2</sup>
Patio	4.7 m <sup>2</sup>
<b>Gross Floor Area</b>	<b>320.28 m<sup>2</sup></b>

**Drop in for a chat today.**

154 Hannell Street,  
Wickham NSW 2293

**Give us a call.**

Office: 4929 0100

Alan Hubber: 0418 618 238

Alanna Reid: 0436 477 111

Terms & conditions \*Package price is correct as of 11/07/17 and valid until 30/12/17. Price is based on standard home, Resort façade and builders preferred siting with building commencing by December 2017. House price package may be subject to developers design review panel, council final approval and G.J. Gardner Homes procedure of purchase. Prices are GST inclusive and may change without notice. Images may depict fixtures, finishes and features not supplied by G.J. Gardner Homes, these items include planter boxes, retaining walls, water features, pergolas, screens and decorative landscaping items such as fencing and outdoor kitchens and barbecues. Facade is for illustrative purposes only and may not be specific to advertised floorplan. For detailed home pricing, please talk to a sales consultant. This design and illustration remains the property of G.J. Gardner Homes and may not be reproduced in whole or in part without written consent. Mark Eddy Building Pty Ltd T/As G.J Gardner Homes Newcastle. Builders licence 106600C.

Welcome **home.**



**G.J. Gardner.** HOMES