

HOUSE AND LAND PACKAGE

IN The Bower, Medowie

(Land Size: 1027m²)

\$647,091

PROTEA 25

Hamilton Facade

235.89m²



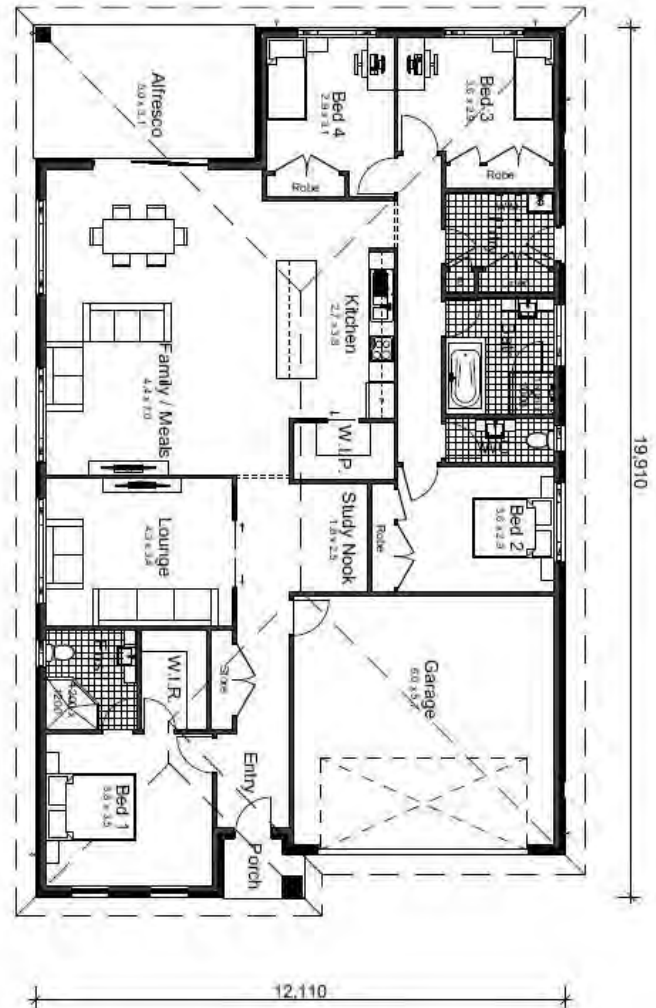
Price based on land cost of \$312,000 at time of printing.

HOUSE AND LAND PACKAGE

LOT 327 Miami Close, MEDOWIE

PACKAGE INCLUSIONS:

- Provisional Site Costs, BASIX and Council Costs
- Truecore Steel Frame & Trusses
- Termimesh Pest Control
- Colorbond Roof with Anticon Blanket
- Flyscreens to all Windows
- Flydoors to All Sliding Doors
- Actron Ducted Air Conditioning
- 900mm Westinghouse Appliances- *Cooktop, Oven, Rangehood, Microwave*
- Stainless Steel Dishlex Dishwasher
- 20mm Caesarstone Benchtops to Kitchen with Waterfall Ends to Island
- Floor Coverings (Carpet & vinyl)
- Concrete Driveway
- Hume 1200mm Stained Entrance Door
- Alfresco with Concrete Slab
- Overhead Cupboards with Sheen Finish
- Automatic Sectional Panelift Colorbond Garage Door with 2 Remotes
- Personal Colour Consultation
- PGH Certified Brick Cleaning
- **Plus many more quality inclusions!**



*Heron Facade floorplan shown- slight differences depending on facade

Contact:

Jackie Barton - Sales Consultant (Harvest Boulevard, Chisholm)

Phone: (02) 4046 9832 Mobile: 0419 417 755

Email: jackie@bartletthomes.com.au

Web: www.bartletthomes.com.au



Price based on standard inclusions and current promotion. Images may include upgrade items and may depict fixtures, features and finishes not supplied by Bartlett Homes such as landscaping and fencing. Floorplan demonstrates Heron facade and may vary depending on chosen facade. Package price may alter depending on geotechnical and soil reports and other factors. This H&L Package is a provisional cost only. See your Bartlett sales consultant for full details. Package correct at time of printing and subject to change without notice of inclusions. Package printed date: 08/10/17