



*Bartlett* HOMES

# HOUSE AND LAND PACKAGE

IN The Bower, MEDOWIE

(Land Size: 799m<sup>2</sup>)

# \$603,502

## WREN V5

Fraser Facade

246.87m<sup>2</sup>



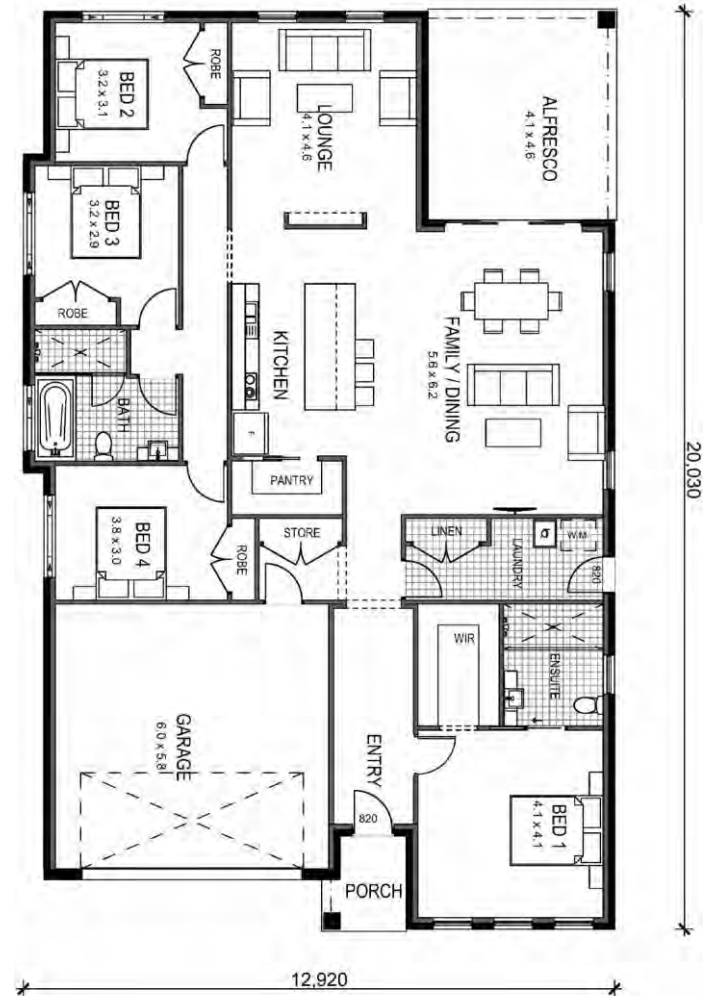
Price based on land cost of \$265,000 at time of printing.

# HOUSE AND LAND PACKAGE

Lot 440 Maya Drive, MEDOWIE

## PACKAGE INCLUDES:

- Provisional Site Costs, BASIX and Council Costs
- Truecore Steel Frame & Trusses
- Termimesh Pest Control
- Colorbond Roof with Anticon Blanket
- Flyscreens to all Windows
- Flydoors to All Sliding Doors
- Actron Ducted Air Conditioning
- 900mm Westinghouse Appliances-  
*Cooktop, Oven, Rangehood, Microwave*
- Stainless Steel Dishlex Dishwasher
- 20mm Caesarstone Benchtops to Kitchen with Waterfall Ends to Island
- Floor Coverings (Carpet & Vinyl Planks)
- Concrete Driveway
- Hume 1200mm Stained Entrance Door
- Alfresco with Concrete Slab
- Overhead Cupboards with Sheen Finish
- Automatic Sectional Panelift Colorbond Garage Door with 2 Remotes
- Personal Colour Consultation
- PGH Certified Brick Cleaning
- **Plus many more quality inclusions!**



\*Heron Facade floorplan shown- slight differences depending on facade

## Contact:

Jackie Barton - Sales Consultant (Harvest Boulevard, Chisholm)

Phone: (02) 4046 9832 Mobile: 0419 417 755

Email: [jackie@bartletthomes.com.au](mailto:jackie@bartletthomes.com.au)

Web: [www.bartletthomes.com.au](http://www.bartletthomes.com.au)

