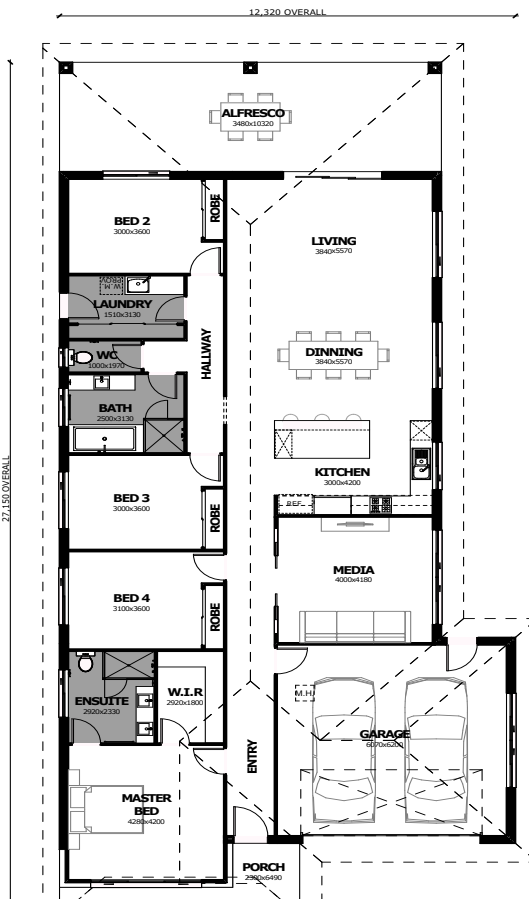


Newcastles No.1 Environmental Home Builder



THE MIDNIGHT

House only \$451,000*

240m² | 4 Bedrooms | 2 Bath | 2 Car

- Insulated double brick home
- Platinum Inclusions
- 6.6kw Solar Panels
- Ducted Airconditioning
- 2.7m high ceilings
- Westinghouse appliances
- Colourbond roofing
- 40mm Smartstone bench tops
- Floor to ceiling tiling in main Bathroom & Ensuite
- 40 Led Downlights
- Ceiling fans throughout
- Laminate floors
- Carpet to all bedrooms

*Excluding Landscaping & Driveway

Our Homes score in the top 2% of Environmental Homes in Australia!
Saving you up to 30% on every electric bill



Phone: (02) 4953 13 15
50 Codrington Street, Barnsley 2278
admin@tomareehomes.com
www.tomareehomes.com

